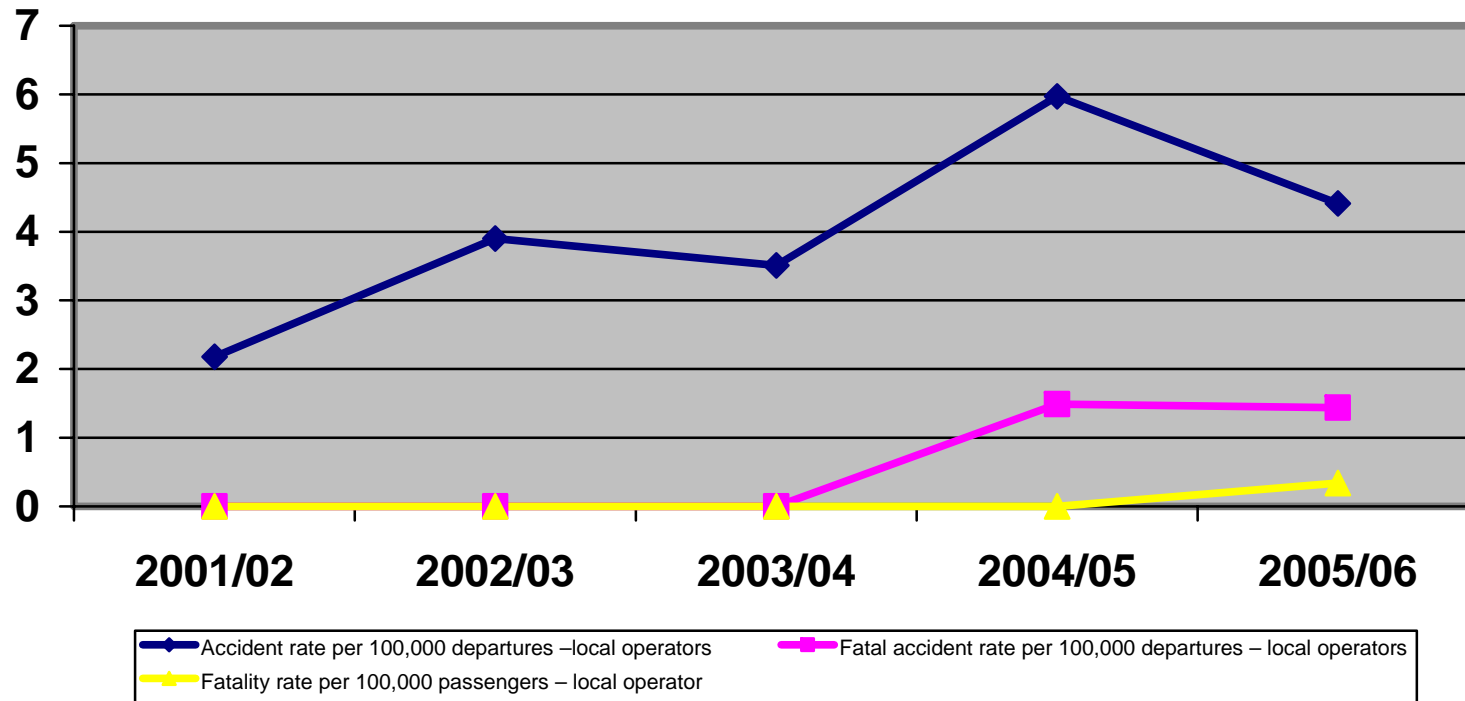


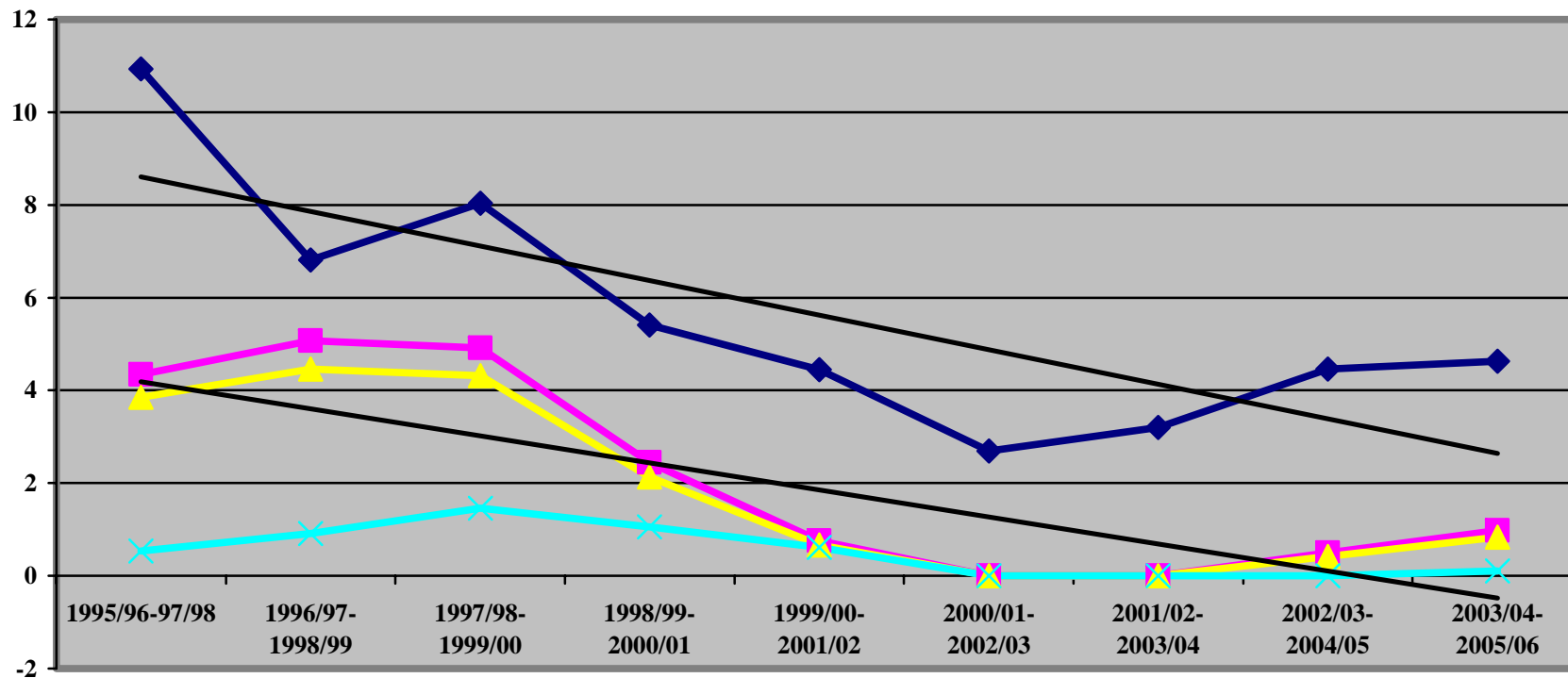
ACCIDENT/INCIDENT PERFORMANCE IN TANZANIA

| | 1995/96 | 1996/97 | 1997/98 | 1998/99 | 1999/2000 | 2000/01 | 2001/02 | 2002/03 | 2003/04 | 2004/05 | 2005/06 |
|--|----------------|----------------|----------------|----------------|------------------|----------------|----------------|----------------|----------------|----------------|----------------|
| Departures by local operators | 34,363 | 36,501 | 40,519 | 39,428 | 43,574 | 50,019 | 45,855 | 51,274 | 56,951 | 67,026 | 69,506 |
| Departures by foreign operators | 4,434 | 4,984 | 5,299 | 5,676 | 6,815 | 7,887 | 11,183 | 11,327 | 12,616 | 12,701 | 8,707 |
| Departures by Local & foreign airlines | 38,796 | 41,484 | 45,818 | 45,105 | 50,389 | 57,906 | 57,038 | 62,601 | 69,567 | 79,727 | 78,213 |
| Passengers by local operators | 520373 | 541164 | 570693 | 596216 | 657904 | 727560 | 767037 | 813958 | 1013310 | 1261172 | 1447142 |
| Passengers by foreign operators | 264262 | 358611 | 402189 | 468872 | 457648 | 485924 | 534908 | 581982 | 664728 | 770187 | 854963 |
| Passengers by local & foreign operators | 784635 | 899775 | 972882 | 1065088 | 1115552 | 1213484 | 1301945 | 1395940 | 1678030 | 2031359 | 2302105 |
| Accidents to local fleet | 6 | 2 | 4 | 2 | 4 | 1 | 1 | 2 | 2 | 4 | 3 |
| Accident to foreign operated aircraft | 0 | 0 | 1 | 0 | 1 | 0 | 0 | 2 | 0 | 1 | 0 |
| Accident to local and foreign | 6 | 2 | 5 | 2 | 5 | 1 | 1 | 4 | 2 | 5 | 3 |
| Incidents to local fleet | 24 | 18 | 19 | 13 | 8 | 13 | 9 | 4 | 10 | 13 | 8 |
| Incidents by foreign operator | 1 | 0 | 1 | 5 | 2 | 2 | 1 | 1 | 2 | 1 | 2 |
| Incidents to local and foreign | 25 | 18 | 20 | 18 | 10 | 15 | 10 | 5 | 12 | 14 | 10 |
| Fatal accidents | 1 | 1 | 3 | 2 | 1 | 0 | 0 | 0 | 0 | 1 | 1 |
| Fatalities | 1 | 1 | 7 | 8 | 12 | 0 | 0 | 0 | 0 | 8 | 5 |
| Accident rate per 100,000 departures – local operators | 17.46 | 5.48 | 9.87 | 5.07 | 9.17 | 2.00 | 2.18 | 3.90 | 3.51 | 5.97 | 4.41 |
| Accident rate per 100,000 departures - local and foreign operators | 15.47 | 4.78 | 10.91 | 4.43 | 9.92 | 1.73 | 1.75 | 6.39 | 2.88 | 6.27 | 3.83 |
| Incident rate per 100,000 departures – local operators | 69.84 | 49.31 | 49.35 | 32.97 | 18.35 | 25.99 | 19.63 | 7.80 | 17.56 | 19.40 | 11.78 |
| Incident rate per 100,000 departures - local and foreign operators | 64.44 | 48.21 | 50.20 | 33.25 | 23.81 | 24.18 | 17.53 | 7.99 | 17.25 | 17.56 | 14.06 |
| Fatal accident rate per 100,000 departures – local operators | 2.91 | 2.74 | 7.4 | 5.07 | 2.29 | 0 | 0 | 0 | 0 | 1.49 | 1.44 |
| Fatal accident rate per 100,000 departures – foreign operators | 0 | 0 | 0 | 0 | 0 | 0 | 0 | 0 | 0 | 7.87 | 0 |
| Fatal accident rate per 100,000 departures – local & foreign operators | 2.58 | 2.41 | 6.55 | 4.43 | 1.98 | 0 | 0 | 0 | 0 | 1.25 | 1.28 |
| Fatality rate per 100,000 passengers – local operator | 0.19 | 0.18 | 1.22 | 1.34 | 1.82 | 0 | 0 | 0 | 0 | 0 | 0.34 |
| Fatality rate per 100,000 passengers – local & foreign operators | 0.12 | 0.11 | 0.71 | 0.75 | 1.07 | 0 | 0 | 0 | 0 | 0.39 | 0.21 |

Accident Performance in Tanzania - Graphical Representation



Accident Rate Three Years Moving Average



- ◆ Accident rate per 100,000 departures -local operators
- Fatal accident rate per 100,000 departures - local operators
- ▲ Fatal accident rate per 100,000 departures - local & foreign operators
- × Fatality rate per 100,000 passengers - local operator
- Linear (Accident rate per 100,000 departures -local operators)
- Linear (Fatal accident rate per 100,000 departures - local & foreign operators)