


|  |  |  |
|--|--|--|
|  <p>FAX: (255 22) 2844300, 2844302<br/> PHONE: (255 22) 2198100<br/> AFS: HTDQYOYO<br/> Email: <a href="mailto:tcaa@tcaa.go.tz">tcaa@tcaa.go.tz</a>, <a href="mailto:ais@tcaa.go.tz">ais@tcaa.go.tz</a><br/> Website: <a href="http://www.tcaa.go.tz">www.tcaa.go.tz</a></p> | <p><b>UNITED REPUBLIC OF TANZANIA</b><br/> <b>TANZANIA CIVIL AVIATION AUTHORITY</b><br/> Aeronautical Information Management<br/> Nyerere/ Kitunda Road Junction<br/> Aviation House, 1st Floor,<br/> P.O. Box 2819, DAR ES SALAAM</p> | <p><b>AIP</b><br/> <b>Supplement</b><br/> <b>31/21</b><br/> <b>23 September 2021</b></p> |
| <p><b>Document No :</b><br/> <b>TCAA/FRM/ANS/AIM-56</b></p>  | <p><b>Title: AIP Supplement</b></p>  | <p><b>Page 1 of 3</b></p>  |

**Effective Date: 04 November 2021**

## **AERODROME**

### **S31 Abeid Amani Karume International Airport – HTZA**

RNAV (GNSS) Instrument Approach Procedure for RWY 18 has been flight checked and approved for use effective from 04 November 2021 with the following changes;

- i. TRANSITION LEVEL FL 040
- ii. TRANSITION ALT 3500 FT

Details of the RNAV (GNSS) Procedures are attached to this AIP Supplement.

**(See attachment 1 and 2 to this AIP Supplement)**

**(Cancel AIRAC AIP SUP NR 04/16)**

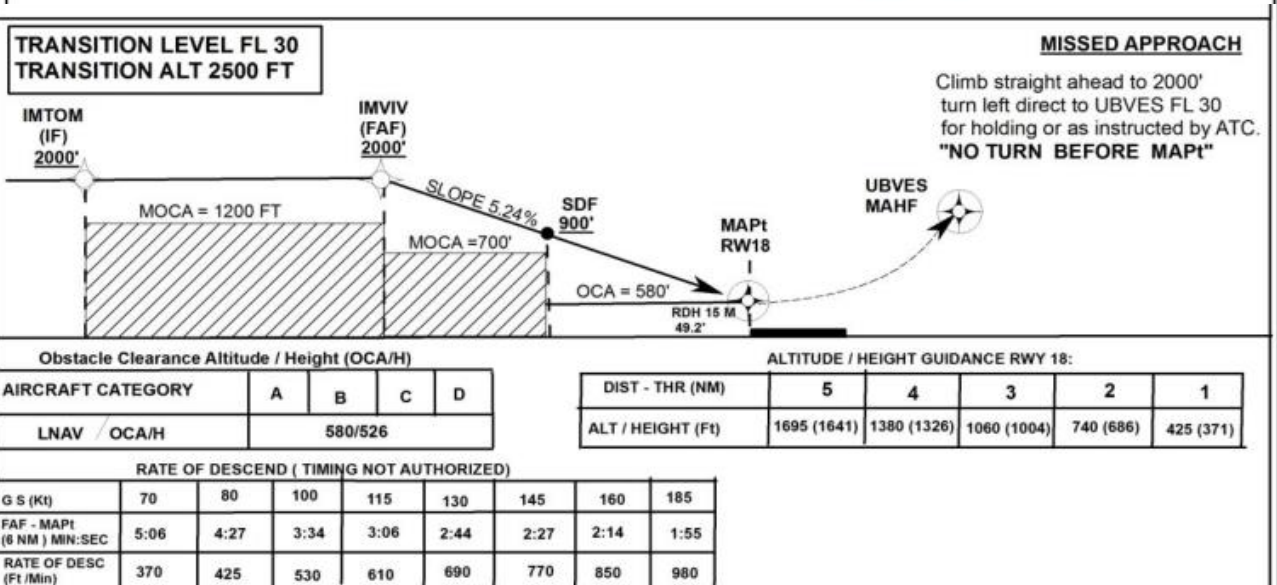
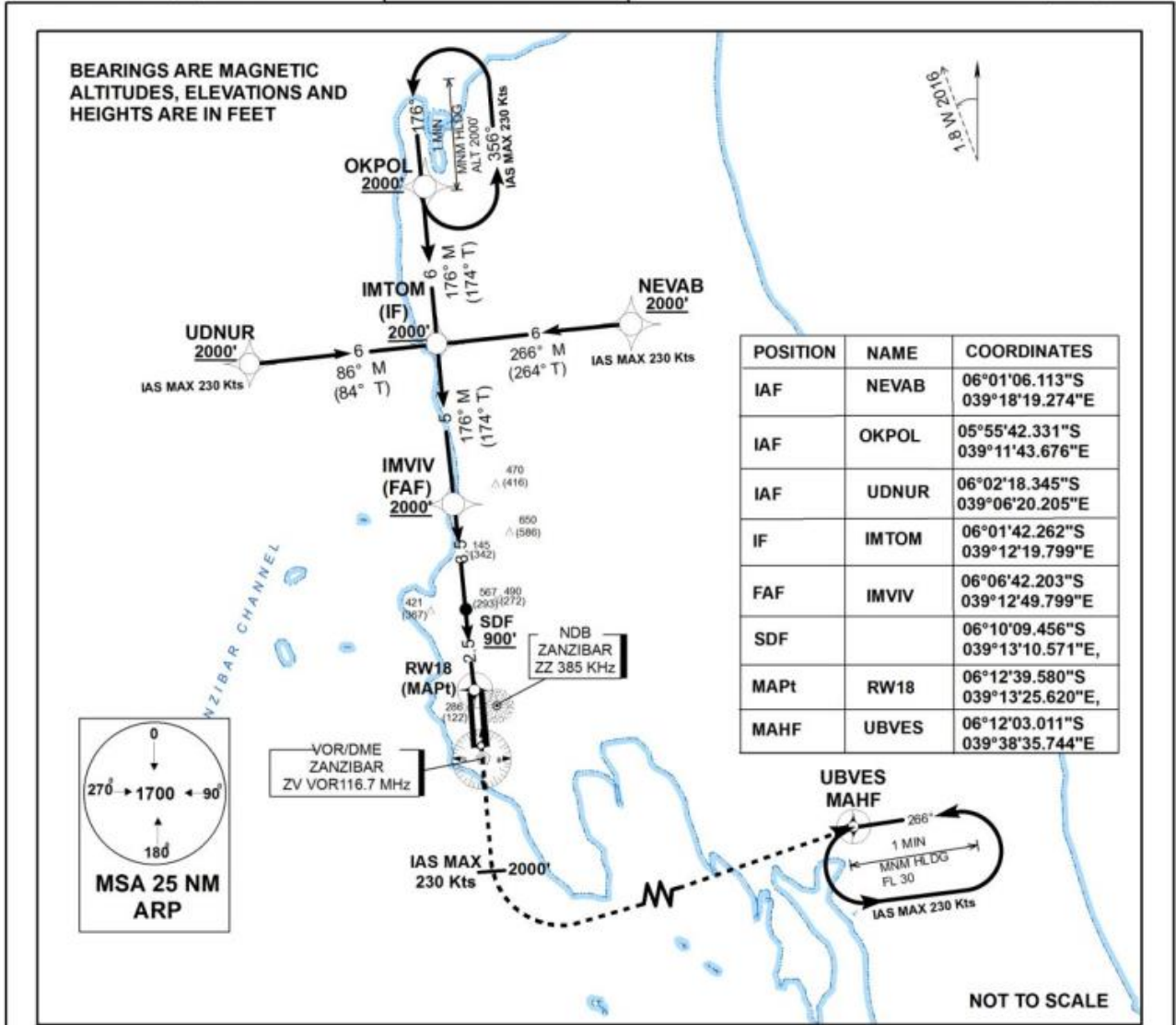
Attachment 1

INSTRUMENT APPROACH  
PROCEDURE CHART - ICAO  
ACFT CATEGORY A, B, C AND D

HEIGHTS ARE RELATED TO  
THR RWY 18 (ELEV 54 FT)  
AERODROME ELEV 54 FT

APP 121.2  
TWR 121.2

ABEID AMANI KARUME INTL AIRPORT/  
HTZA  
RNAV (GNSS) RWY 18



**APPROACH PROCEDURE DATA INTEGRATORS FOR ABEID AMANI  
KARUME INTERNATIONAL AIRPORT ( HTZA)  
RNAV (GNSS) INSTRUMENT APPROACH PROCEDURE  
RWY 18:**

| Seq Number | PATH Descriptor | Way-point Identifier | Fixes | Coordinates                             | Status   | Altitude Constraint | Speed Constraint |
|------------|-----------------|----------------------|-------|---|----------|---------------------|------------------|
| 01         | IF              | NEVAB                | IAF   | 06° 01' 06.113" S<br>039° 18' 19.274" E | Fly-By   | +2000ft             | -230kt           |
| 01         | IF              | OKPOL                | IAF   | 05° 55' 42.331" S<br>039° 11' 43.676" E | Fly-By   | +2000ft             | -230kt           |
| 01         | IF              | UDNUR                | IAF   | 06° 02' 18.345" S<br>039° 06' 20.205" E | Fly-By   | +2000ft             | -230kt           |
| 02         | TF              | IMTOM                | IF    | 06° 01' 42.262" S<br>039° 12' 19.799" E | Fly-By   | +2000ft             | -                |
| 03         | TF              | IMVIV                | FAF   | 06° 06' 42.203" S<br>039° 12' 49.799" E | Fly-By   | +2000ft             | -                |
| 04         | TF              | RW18                 | MAPt  | 06° 12' 39.580" S<br>039° 13' 25.620" E | Fly-Over | @103ft              | -                |
| 05         | CA              |                      |       |   |          | @2000ft             | -230kt           |
| 05         | DF              | UBVES                | MAHF  | 06° 12' 03.011" S<br>039° 38' 35.744" E | Fly-Over | + FL30              | -230kt           |

**RNAV (GNSS) HOLDINGS:**

| Way-point Name | Status   | Inbound magnetic course (True value) | Leg length (MIN) | Turn direction | Altitude Constraint | Speed Constraint |
|----------------|----------|--------------------------------------|------------------|----------------|---------------------|------------------|
| OKPOL          | Fly-over | 176° (174°)                          | 1                | LEFT           | +2000ft             | -230kt           |
| UBVES          | Fly-over | 266° (264°)                          | 1                | LEFT           | +FL30               | -230kt           |